



INTRODUCTION

“ Our parish community has expressed many concerns about having difficulties when walking and cycling to and from the village shops and amenities. After extensive consultation and your valuable feedback, we will be improving the active travel infrastructure in our village. The St John's Village Improvement Board have worked in collaboration with the Government's Infrastructure and Environment Department, who are responsible for our main roads, to develop this final scheme which I hope we can start constructing in Autumn 2024.

These improvement works include two zebra crossings, a pedestrian refuge and some widening of pavements to make our village more accessible for all, especially children going to our parish school, our elderly and those who want to walk between the great amenities in our village. The designs aim to be in keeping with our village. Reducing the speed limit to 20mph throughout the village will ensure pedestrians feel safer when crossing the busy main roads that divide the village.

I hope you will be as pleased as I am that these improvements are going ahead now, the Village Board and I look forward to seeing the construction underway this year. ”

Andy Jehan, Connétable of St John

St John's Village Improvement Board (Parish representatives supported by Government's technical team) developed improvement options of the village which were presented at a community workshop on Saturday 24 June 2023 and then an online consultation between 21 August 2023 and 2 October 2023. The community workshop at the Parish Hall was well attended and an online consultation, promoted through a parish wide letter drop, received 204 responses. The feedback from parishioners was a desire for proportionate change to improve walking routes but to preserve village features.

After listening to and acting upon community suggestions, the improvement scheme has been finalised. This exhibition material explains the planned changes for improving active travel routes in and around the village. Feedback in relation to minor practical implementation issues will be considered but the overall scheme components have been finalised.

The Village map on the next page shows improvements, which include:

- **A new zebra crossing at the Parish Hall.**
- **A new zebra crossing on La Route du Nord linking to Maison Le Vesconte.**
- **Improvements at the main road junction by the Parish Church to reduce car dominance and emphasise the entry to the village.**

These improvements will be supported by a 20mph village speed limit to improve the feeling of safety for those walking in and around the village.



IMPROVEMENTS

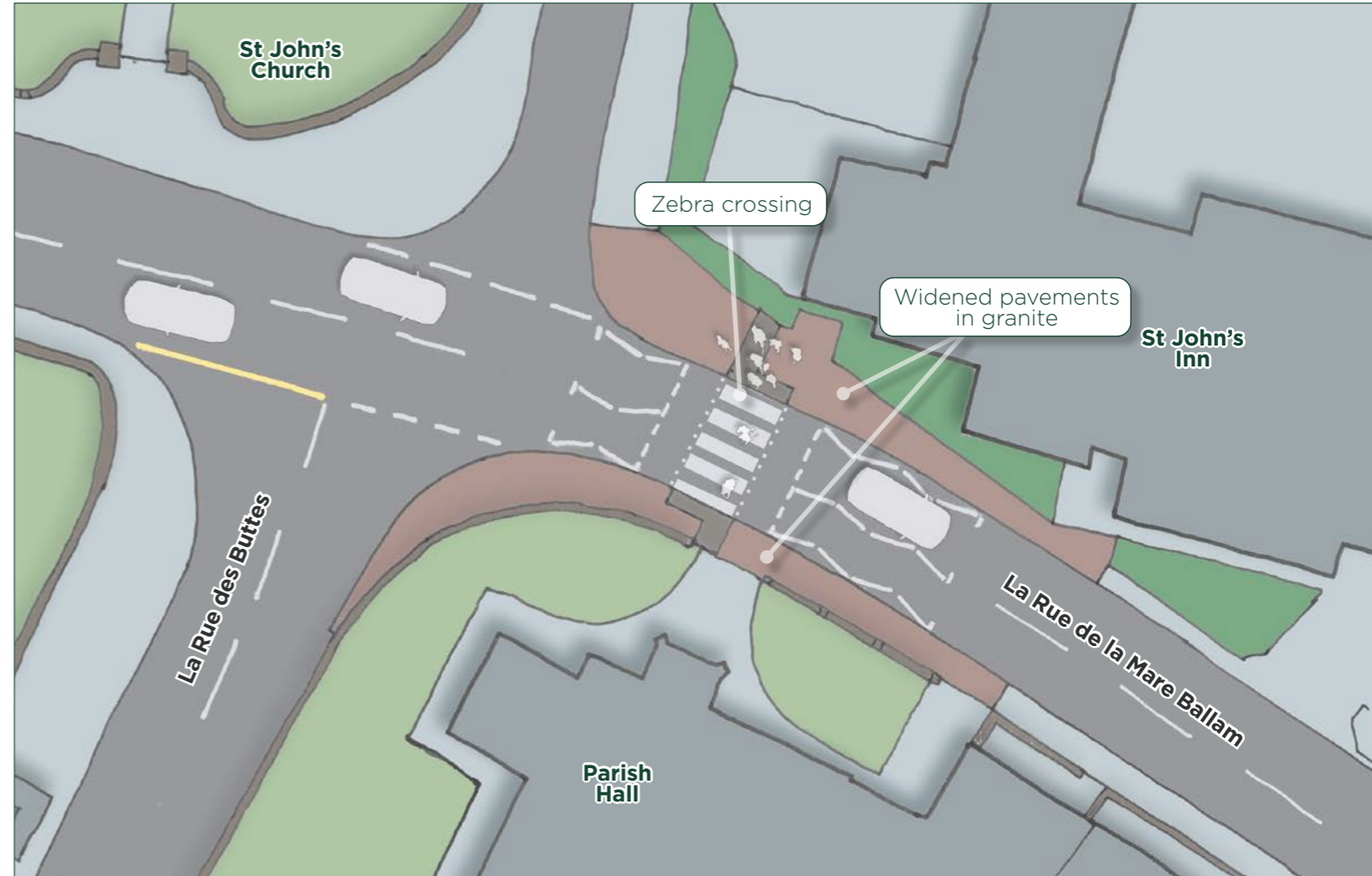


Speed Limit Change

A 20mph zone as previously consulted on will be introduced to make walking in and around the village safer.

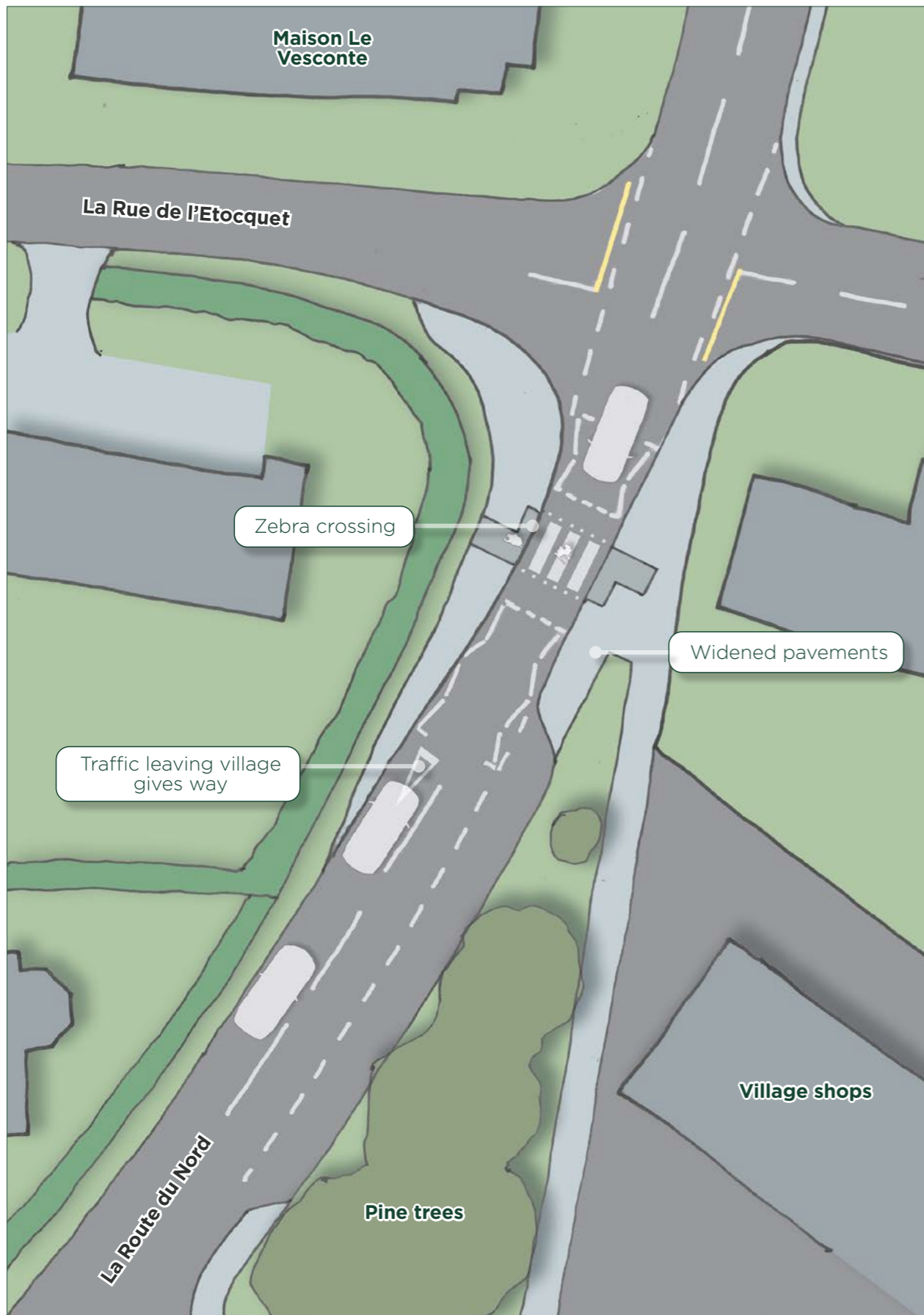


View of zebra crossing, looking to the west



Parish Hall Crossing

A zebra crossing to the Parish Hall will be provided by St John's Inn, with belisha beacons and a new street light to meet safety standards. The pavements either side will be widened, to ensure pedestrians wanting to cross can see approaching traffic. There will be granite paving in keeping with the setting of the Parish Hall.



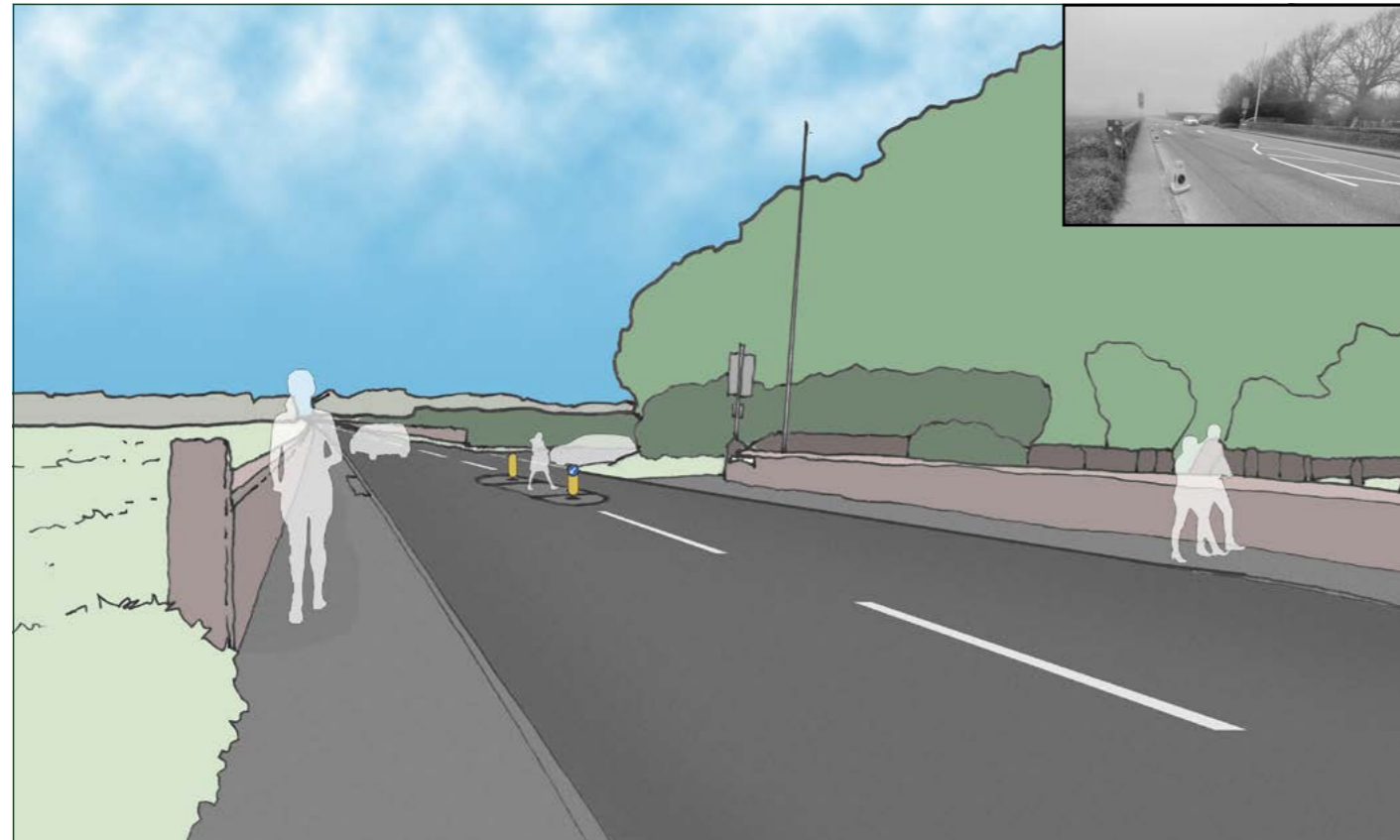
View of zebra crossing, looking towards the village

La Route du Nord Crossing

A zebra crossing on La Route du Nord will be provided just south of La Rue de l'Etocquet, linking to Maison Le Vesconte.

The road will be narrowed at the crossing allowing the pavements to be widened on both sides, ensuring pedestrians can see approaching traffic, and with a give-and-take arrangement for drivers.

The scheme will also include street lighting improvements.



View towards pedestrian refuge, looking to the west

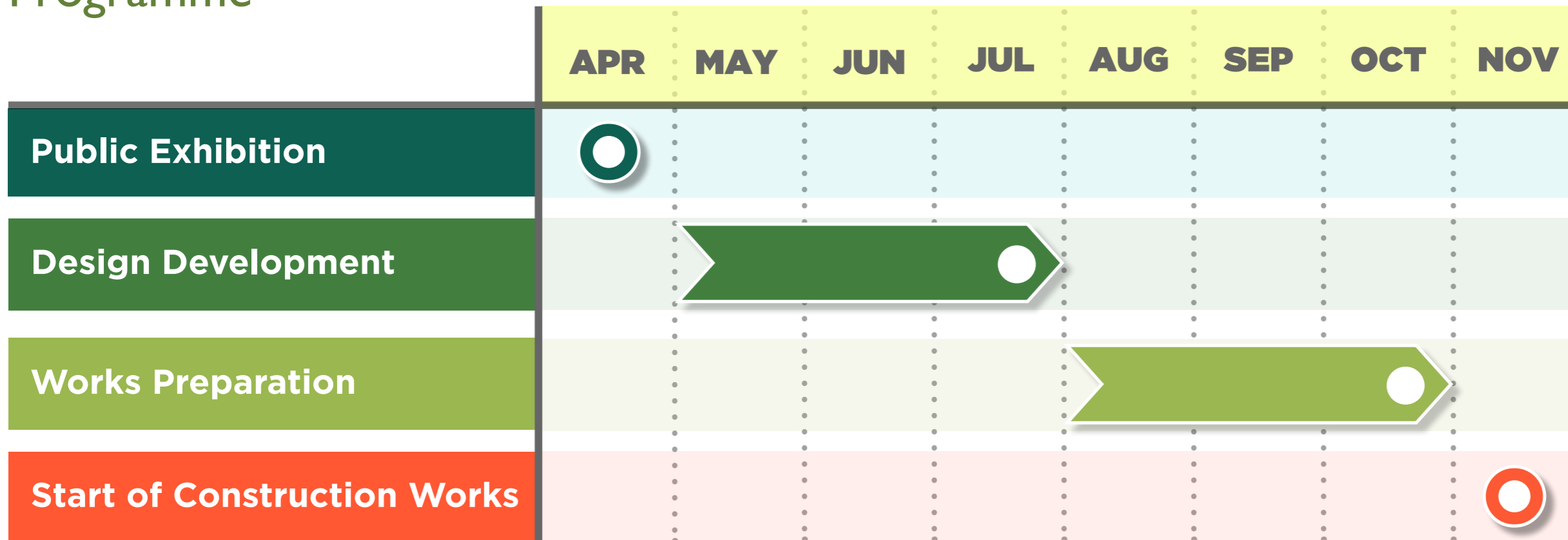


La Route de Saint Jean Improvements

At the main road junction by the church, the right turn lane will be removed to create space for better pavements and a new pedestrian central refuge, which will link to the footpath on the western side of St John's Parish Church, and where the St John's Memorial Gardens are being proposed. A widening of the southern pavement, and the narrowed junction with La Route du Nord, will reduce car dominance on the entry to the Village.



Programme



Contact

If you have any queries please contact us



Call:
01534 445509



Email to:
dfi@gov.je



Data Protection Information

Please note that should you need to contact Infrastructure and Environment (I&E) in relation to this work, we will need your name and contact details in order to respond to your enquiry.

For details of how the Transport and Highways section of I&E use your personal data please see the Transport and Highways privacy notice on:

www.gov.je/highwayprivacy