

Specialist Arts Therapist (Art, Music, Drama)

Department: Children, Young People, Education and Skills

Division: Education

Reports to: Psychology and Well-being Service Manager

JE Reference: CYP1236

Grade: CS11

JE Date: 25/11/2024

Job purpose

The postholder is required to carry out clinical assessment and using evidence based outcome measures, clinical audit and research recommend appropriate arts therapy treatment to clients who have a range of psychological difficulties, in order to provide effective treatment to improve the mental health and wellbeing and improve social inclusion for Islanders age 18 and below. The postholder will work closely with team members in supporting young people and their carers to improve outcomes.

Job specific outcomes

1. Implements a high-quality service of evidenced based psychological therapies appropriate to the psychological difficulty presented, with support from other professions across CYPES and relevant external agencies to improve the mental health and wellbeing and increase the opportunities for social inclusion for each young person.
2. To receive and evaluate referrals. To assess referrals and develop a formulation of service user's difficulties and needs, strengths and potential, considering current and historical factors regarding emotional and psychological difficulties, interpersonal dynamics and risk issues. To assess suitability and formulate an appropriate arts therapies treatment and to make appropriate onward referrals if arts therapy is not suitable.
3. Collaboratively contributes with service and operational leads to deliver arts therapeutic services in a variety of appropriate, accessible and equitable locations and ensure the services are culturally relevant to ensure that arts therapeutic intervention will be effective for diverse clients from a range of backgrounds.
4. Oversee the assessment of each allocated young person's presentation and possible risk via agreed protocols within the CYPES Psychological Assessment and Therapy Service to agree a suitable referral and place the client on the appropriate arts therapeutic pathway.
5. Formulate, implement and evaluate appropriate specialist arts therapy programmes for young people with a designated caseload to ensure that each young person receives the most suitable arts therapy support available.
6. Maintain coherent records of all clinical activity and accurate collation of data, including the results of clinical audits of service performance and service user surveys and evaluations to ensure all requirements relating to data collection are carried out in line with CYPES protocols.

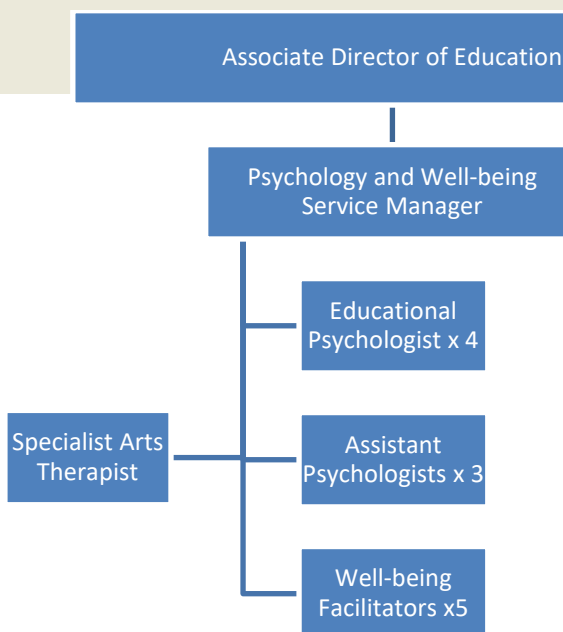
7. Maintain links with Primary Care to help co-ordinate the provision of an effective Specialist Arts Therapies Service and participate in special interest groups across government services and other local agencies (Safeguarding, CAMHS, Education Children's Social Care) in order to develop and implement smooth care pathways.
8. Adhere to best practice recommendations/guidelines and regulating professional and accredited bodies. Maintain and keep up to date with advances in spheres of relevant arts therapy, organizing peer group and other educational activities relevant for staff skills development/learning inside and outside the service.
9. Identify and report issues to help co-ordinate the provision of an effective specialist arts therapies service and support service improvement.
10. Lead in the development of clinical practice across multi professional teams to ensure evidence-based practice is implemented, up to date and appropriate for service provision.

Statutory responsibilities

Active engagement, participation and compliance with any other statutory responsibilities applicable to the role, as amended from time to time.

This role is politically restricted. The job holder is not permitted to undertake political activity involving standing for election to the Government or as a Parish Constable, or publicly supporting someone who is standing for election or playing a public part in any political manner.

Organisation chart



Person Specification

Specific to the role

ATTRIBUTES	ESSENTIAL	DESIRABLE
<p>Qualifications</p>	<p>Degree in relevant subject and relevant work experience: M.A. Arts psychotherapies (art drama or music)</p> <p>Evidence of Individual & group clinical arts therapies work post qualification</p> <p>Registered with Health and Care Professions council (HCPC) and the relevant professional body:</p> <p>British Association of Art Therapists (BAAT) British Association of Dramatherapists (BADth) British Association for Music Therapy (BAMT) British Association of Counselling and Psychotherapy (BACP)</p> <p>Evidence of continued professional development</p>	<p>Experience of key working and care co-ordination of clients</p>
<p>Knowledge</p>	<p>Demonstrates skills required of providing a range of therapeutic interventions including assessment, in-school work, exploratory and supportive.</p> <p>Knowledge of trauma informed practice is essential and the postholder will be implementing trauma informed approaches for a range of presentations</p> <p>Ability to describe work-based learning and evidence-based approach</p> <p>Demonstrates skills and work-based learning of working with people with a range of school learners with complex learning needs.</p> <p>Demonstrates understanding of highly developed organisational and self-management skills. Demonstrates developed skills in clinical supervision of arts psychotherapists any other professionals.</p>	<p>Demonstrates clear use of different types of supervision and how it has benefitted work role</p>

	<p>Understanding of how charitable/ voluntary organisations can contribute to support local people</p> <p>Sound governance, risk, and mitigation knowledge</p> <p>Understand the concept of stabilisation, psychological containment and validation</p>	
Technical / Work-based Skills	<p>IT literate</p> <p>Highly developed skills in the application of psychodynamic formulations and theory to work with individuals, groups, and teams</p> <p>Able to actively develop an evidence base for their work through the use of outcome measures, clinical audit and research.</p> <p>Experience and understanding of a wide range of arts processes and equipment</p>	
General Skills/Attributes	<p>Ability to communicate effectively in a highly emotive atmosphere, to overcome students' psychological resistance to personal disclosure and potentially threatening information, e.g., child protection and self-harm.</p> <p>Highly developed knowledge of and skills in assessing clients for arts psychotherapies and/or other treatment interventions, including risk assessment and contributing to diagnosis.</p> <p>Ability to explain arts therapies practice to a wide range of professionals, service users and other stakeholders.</p> <p>Knowledge of other modalities (e.g. medical model, systemic, behavioral) sufficient to contribute to multi-disciplinary planning and service provision.</p> <p>To judge when a service user or colleague might need emotional support and to show interest in understanding how they are feeling and help them think through ways of coping that are known to help reduce distress safely</p> <p>To understand and empathise with people who may have communication difficulties</p> <p>Excellent report writing skills</p> <p>Ability to chair and guide meetings that may contain difficult and contentious information Ability to challenge and hold to account in a professional manner.</p>	

<p>Experience</p>	<p>Significant experience of working as an arts therapist with school learners with complex health needs.</p> <p>Experience of working with the challenges of various multi-disciplinary teams and communicating complex information within the team.</p> <p>Experience of carrying out clinical assessment and using evidence based research recommend and provide appropriate specialist arts therapy</p> <p>Experience of working extensively with carers and families</p> <p>Experience of delivering specific specialist arts interventions and be able to adapt treatment to meet the young persons needs as required.</p> <p>Experience of working collaboratively in a multi-disciplinary team and able to inspire on the benefits of arts therapies.</p>	
<p>Criteria relating to Safeguarding</p>	<p>Up to date with mandatory safeguarding training. Aware of safeguarding procedures and protocols for both Adults and Children</p>	
<p>Core Accountabilities, Attributes and Behaviour Indicators</p>		
<p>Appointees to this role will be required to adhere to and perform their duties in line with the standards identified in the States of Jersey tier 4 core accountabilities attributes and behaviour indicators.</p>		