

## Antenatal Ultrasound Midwife Sonographer (Third Trimester)

---

**Department:** Health, Community and Social Services (HCS)

**Division:** Women's Children's & Family Care Group

**Reports to:** Antenatal Ultrasound Imaging Modality Manager

**JE Ref:** HCS1053

**Grade:** NM05

**JE Date:** 3/11/2021

### Job purpose

To work as part of the Women's & Children's are Group ultrasound team undertaking scanning and reporting on growth of singleton third trimester antenatal ultrasound examinations. The postholder will be able to scan and independently assess scans undertaken, plan care and refer to appropriate clinicians when necessary.

### Job specific outcomes

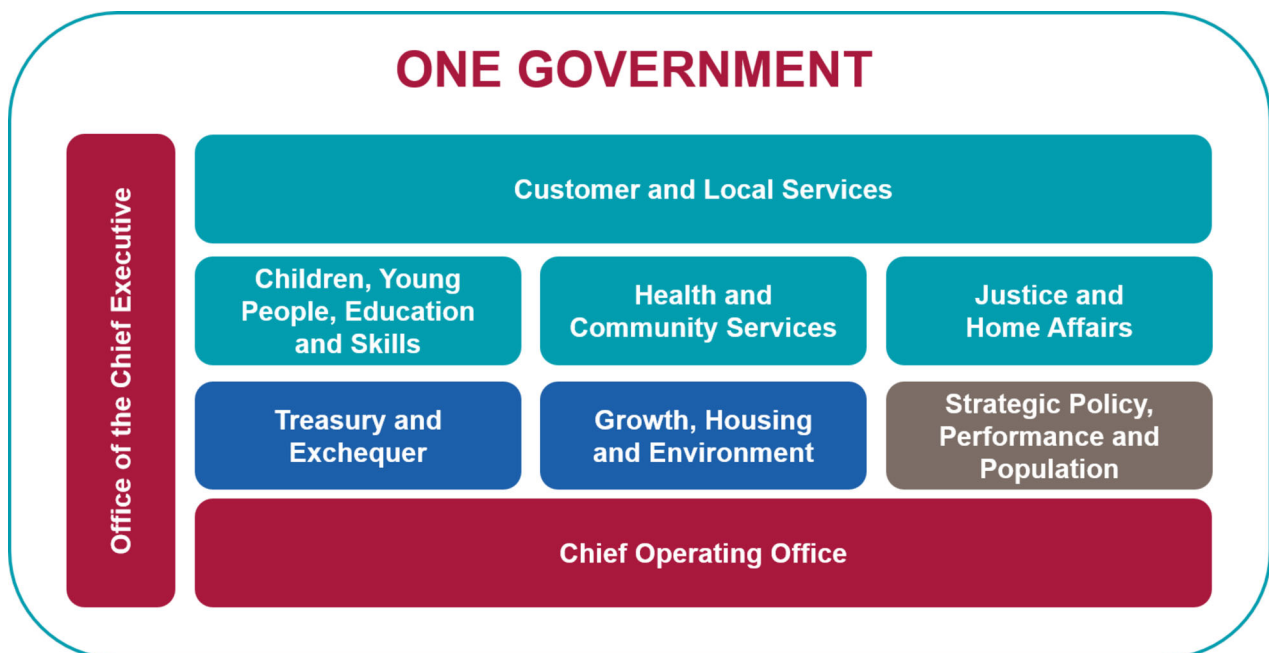
1. Provide an efficient, effective, and high quality service, respecting the needs, ethics and philosophy of each woman and her family.
2. Carry out ultrasound imaging examinations of patients in a caring and efficient manner, ensuring that consent has been obtained.
3. Maintaining a proficient and high standard of ultrasound scanning techniques whilst maintaining the patient's dignity and privacy, in accordance with departmental protocols, procedures and regulations in order to ensure the smooth and effective running of the service.
4. Manage imaging equipment to ensure faults are identified, appropriate action taken, and equipment quality is maintained.
5. Keep the work area clean, tidy and stocked and control standards and management of any health and safety problems, in order to ensure compliance with infection prevention standards and health and safety legislation.
6. Organise own lists, including the maintenance of appropriate waiting times and appointment schedules, to ensure that the service is provided in the most efficient, effective and economic way while caring appropriately for the patients.
7. Maintain all relevant records in the required format and on time and operate information and communication systems to ensure the integrity of information stored on all databases and provide relevant information for improved patient care and effective resource management in compliance with data protection policies and legislation.
8. Actively partake in clinical audit to ensure good standards of care and patient quality. Using best practice guidance, contribute to ensure the most up to date practice is provided and benchmarking is undertaken as a standard.

9. Actively participate in and contribute towards a good standard of clinical governance and teaching when required.
10. Develop and maintain a patient centred approach to care provided. Ensuring excellent relationship building with both internal and external stakeholders. Extend this patient centred approach to ensure that patient feedback is utilised to improve service delivery where possible.
11. Provide sound theoretical & practical knowledge of specialist modality ensuring delivery of high-quality practice in an independent setting.

### Statutory responsibilities

- The postholder will have to comply with all relevant States Laws, such as the Health and Safety at Work (Jersey) Law 1989 and any other associated legislation, Standing Orders, Financial Directions, and other relevant Codes of Practice, in respect of managing the key project deliverables of programmes and costs through the active management of procurement, approval, financial and administrative procedures.
- To be responsible for your own health and safety and that of your colleagues, in accordance with the Health and Safety at Work (Jersey) Law, 1989
- To work in accordance with the Data Protection (Jersey) Law;
- This role is politically restricted. The jobholder is not permitted to undertake political activity involving standing for election to the States or as a Parish Constable, or publicly supporting someone who is standing for election or playing a public part in any political manner.

### Organisational structure



## Person Specification

### Specific to the role

ATTRIBUTES	ESSENTIAL	DESIRABLE
<p><b>Qualifications</b> <i>Please state the level of education and professional qualifications and / or specific occupational training required.</i></p>	<p>A relevant qualification – either RM or BSc Midwifery</p> <p>Completion of access course for Third Trimester Obstetric growth assessment.</p> <p>Registered with the Nursing and Midwifery Council</p>	
<p><b>Knowledge</b> <i>This relates to the level and breadth of practical knowledge required to do the job (e.g. the understanding of a defined system, practice, method or procedure).</i></p>	<p>Demonstrates sound theoretical &amp; practical knowledge of specialist modality to deliver a high-quality practice and management of the service.</p> <p>Practical knowledge of how to independently perform relevant examinations.</p> <p>Good understanding of the medico-legal aspects of obstetric ultrasound reporting.</p> <p>Demonstrates an understanding of clinical governance.</p> <p>Partakes in audit.</p> <p>Understanding of the supervision of others in a professional capacity.</p> <p>Good understanding of relevant H&amp;S requirements</p> <p>Good understanding of data protection requirements.</p> <p>Good understanding of change management.</p> <p>Ability to manage and monitor worklists</p> <p>Maintain obstetric and ultrasound knowledge and skills with continuing CPD</p>	<p>Awareness of the roles of other services (Health, Social Care and Education) and the interface with Psychological Therapy.</p>
<p><b>Technical / Work-based Skills</b> <i>This relates to the skills specific to the job, e.g. language fluency, vehicle license etc.</i></p>	<p>Able to demonstrate a range of information technology skills i.e. an ability to effectively use IT equipment and role critical software.</p> <p>Able to operate the full range of imaging equipment within the specialist modality and train others on their use.</p> <p>Competent in third trimester growth measurements</p>	
<p><b>General Skills/Attributes</b> <i>This relates to more general characteristics</i></p>	<p>Excellent relationship building with both internal and external stakeholders, and especially with service users.</p>	

<p><i>required to do the job effectively, e.g. effective written communication skills, ability to delegate, motivation or commitment etc.</i></p>	<p>Able to understand and manage a range of complex facts or situations requiring analysis.</p> <p>Good problem-solving acumen.</p> <p>Excellent communication; verbal and written.</p> <p>Communicates effectively across all levels and media.</p> <p>Ability to adapt personal style in order to influence others and gain support for ideas. Demonstrates empathy towards individual clients, their partners and families.</p> <p>Supports the development of and shares learning with other members of staff.</p> <p>Able to remain professional and effective under pressure.</p> <p>Committed to continuous service improvement and also continued professional development for themselves and their team.</p> <p>Self-directed and resourceful.</p> <p>Flexible approach to working practices</p> <p>Is able to prioritise when competing challenges present. Is able to remain calm and demonstrate a professional approach during times of worry or concern for patients/staff.</p> <p>Be an autonomous practitioner formulate reports and demonstrate initiative to refer appropriately when deviation from the normal growth velocity</p> <p>Review growth scan results with reference to documented patient care plans, organising follow up as necessary.</p>	
<p><b>Experience</b></p>	<p>Experience of working effectively within a multidisciplinary team.</p> <p>Evidence of ongoing professional development</p>	

### Core Accountabilities, Attributes and Behaviour Indicators

Appointees to this role will be required to adhere to and perform their duties in line with the standards identified in the States of Jersey tier 5 core accountabilities, attributes and behaviour indicators.

The standards relevant to this tier, identified in the States of Jersey core accountabilities attributes and behaviour indicators, are to be attached in a separate document.

### Organisation chart

## Women's & Children's Care Group

### Ultrasound Imaging Modality - Structure

