

## Job Title **Dental Therapist**

---

<b>Department:</b>	Health and Community Services	
<b>Section:</b>	Primary, Preventive and Intermediate Care Group	
<b>Reports to:</b>	Community Dental Lead	
<b>JE Ref:</b>	HCS1232	
<b>Grade:</b>	CS11	<b>JE Date:</b> 11/08/2023

### Job purpose

To provide a wide range of dental treatment including all extended duties appropriate to a registered (with the General Dental Council (GDC)) dental therapist at the request of dentist working within the Health and Community Services dental department

The post holder will provide clinical dental therapy, preventative oral health care and oral health promotion to patients within the dental department.

The patient base will predominantly be primary school aged children but includes both adults and children with a physical, sensory, intellectual, mental, medical, social impairment or disability and those who require specialist occasional care due to medical, physical or behavioural difficulties.

It also includes care for children with extensive oral disease, those with developmental disorders of the teeth and mouth and children who are anxious or too young to accept routine dental treatment if required. Care will mainly be provided in the dental hospital.

The service works in partnership with the wider health and social care system to improve access to early intervention and treatment, reduce health inequalities and promote prevention of oral diseases.

*This is a generic job description. Additional specific responsibilities and requirements depending on specialty will be confirmed during the appointment and induction processes*

### Job specific outcomes

The duties of the post holder will include (but is not limited to) the following:

#### Main Duties of the Role:

- Provides oral health advice and instruction to service users with a wide range of additional needs, including adults & children with learning disabilities, physical disabilities, complex medical histories, challenging behaviours and looked after children
- Carries out specialist clinical, preventative & restorative treatments under the prescription of a dentist. The post holder may need to provide direct access to dental care where that care is within their GDC scope of practice, and the individual is qualified, competent and indemnified to do so

- Provision of dental treatment includes: -
  - Direct access examination and treatment planning of children and adults as per HCS remit
  - Restorative procedures in the primary and permanent dentition
  - Extraction of primary teeth and roots.
  - Placing stainless steel crowns on primary teeth
  - Administration of inferior dental block and infiltration injections
  - Re-cementing crowns in an emergency
  - Removal of excess cement using hand and rotary instruments
  - Taking impressions
  - Prescribing, taking and processing of radiographs
  - Periodontal treatment including scaling, root debridement etc
  - Fissure sealants/preventive resin restorations
  - Oral hygiene instruction and preventive advice e.g., dietary advice.
  - Application of topical medicaments e.g., fluoride
  - Recognition of oral pathology
  - Dispensing of oral hygiene adjuncts as per the Patient Group Directive
  - May treat patients under inhalation sedation – following appropriate training
- To develop good communication with all members of the dental teams and referring practitioners. Ensure information reaches all team members and relevant professionals in cases where treatment is “shared”
- Responsible, jointly with the Clinical Lead, for demonstrating and further developing the vision, mission and agreed values that guide the service in its work
- Input into the planning, development, implement and evaluation of programmes to prevent disease and promote health in target groups within the population.
- Promote oral health and preventive dental care and assisting in planning and provision of oral health promotion programmes as required
- Produce and maintain accurate records of dental care, using computer systems where used within the service and assist with the data collection for service monitoring.
- Participate in Clinical Governance Programmes as required by the service including audit, peer review and annual performance appraisal.
- Ensure that standards for Dental Professionals are met as required by the General Dental Council this will include demonstration of required Continual Professional Development (CPD).
- Be registered with the GDC and Jersey Care Commission
- Contribute to the continued development of the Community Dental Service as a whole through contribution at team meetings.

### Statutory responsibilities

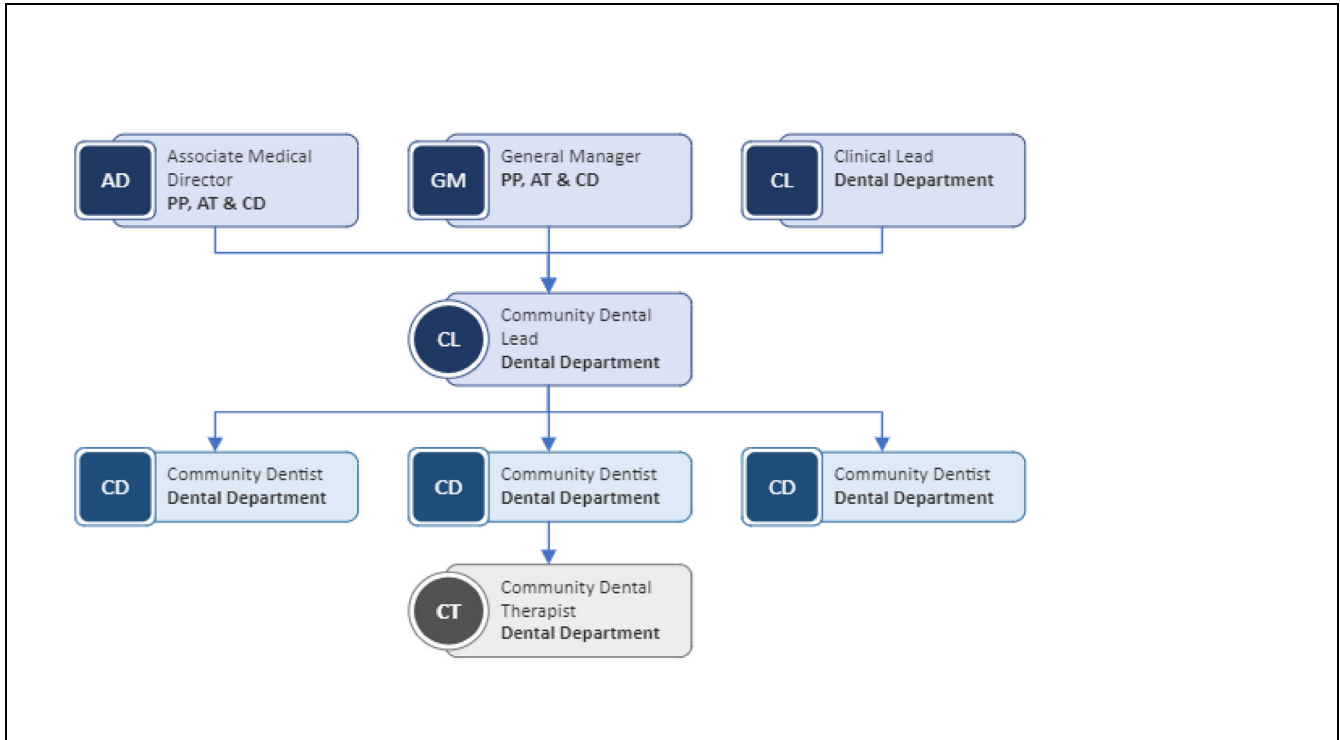
- The post holder will have to comply with all relevant States Laws, such as the Health and Safety at Work (Jersey) Law 1989 and any other associated legislation, Standing Orders, Financial Directions, and other relevant Codes of Practice, in respect of managing the key project deliverables of programmes and costs through the active management of procurement, approval, financial and administrative procedures.
- Active engagement, participation, and compliance with any other statutory responsibilities applicable to the role, as amended from time to time.
- To be responsible for your own health and safety and that of your colleagues, in accordance with the Health and Safety at Work (Jersey) Law, 1989
- To work in accordance with the Data Protection (Jersey) Law.
- This role is politically restricted. The jobholder is not permitted to undertake political activity involving standing for election to the States or as a Parish Constable, or publicly supporting someone who is standing for election or playing a public part in any political manner.

### Organisational structure

#### Government Departments



### Organisation chart



## Person Specification

### Specific to the role

ATTRIBUTES	ESSENTIAL	DESIRABLE
<b>Qualifications</b>	<p>BSc/Diploma/equivalent qualification in Dental Therapy</p> <p>GDC registered as a Dental Therapist</p> <p>Registration with Jersey Care Commission (JCC)</p> <p>Appropriate DBS clearance</p>	<p>Certificate / Diploma in conscious sedation or equivalent</p>
<b>Knowledge</b>	<p>Experience of full remit of work as GDC guidelines</p> <p>Able to demonstrate a knowledge of Clinical Governance, Quality Assurance and Audit</p> <p>Participation in a multi-disciplinary team</p>	<p>Experience of working in Salaried Primary Dental Care Service (Community Dental Service) or equivalent</p>
<b>Technical / Work-based Skills</b>	<p>The ability to work flexibly in accordance with service needs</p>	<p>Treatment using inhalation sedation</p>

	<p>Ability to interact with patients in a calm and reassuring manner and to advise them on how to look after their teeth and gums.</p> <p>Effective listening and good motivational skills to educate patients to maintain healthy oral hygiene</p> <p>The ability to work as part of the team and independently</p> <p>The ability to complete clear and concise patient records using practice management software where available</p> <p>Excellent manual dexterity and confidence in handling dental tools and equipment</p> <p>A good standard of written and spoken English is required to be able to undertake the relevant duties.</p> <p>Able to be accurate and good attention to detail</p>	<p>Treatment under general anaesthetic</p>
<p><b>General Skills/Attributes</b></p>	<p>Excellent communication skills.</p> <p>Good IT skills.</p> <p>Strong planning and organisational skills.</p> <p>Friendly, confident and professional manner when interacting with patients and colleagues</p> <p>Self-motivated.</p> <p>Initiative and ability to work with minimum supervision.</p> <p>Sensitivity, compassion and a patient centred approach to care</p>	<p>Good analytical and reasoning skills.</p> <p>Effective negotiating and influencing skills.</p> <p>Ability to understand service redesign</p>

	Exemplary personal standards of conduct and behaviour.	
<b>Experience</b>	Evidence of continuing professional education, peer review and other clinical governance activities	Evidence of leading clinical governance activities

### Personal Attributes

**Delete as appropriate:**

Appointees to this role will be required to adhere to and perform their duties in line with the standards identified in the States of Jersey tier 4 core accountabilities attributes and behaviour indicators.