

## Marine Science and Research Manager

---

**Department:** Infrastructure, Housing and Environment

**Division:** Natural Environment

**Reports to:** Head of Service

**JE Reference:** IHE1027

**Grade:** 12

### Job purpose

Leading and managing the design and implementation of marine science projects and strategy to protect the local marine and coastal environment, raise awareness of marine environmental issues and fulfil the Island's responsibilities under local and international environmental legislation and commitments.

### Job specific outcomes

Lead the implementation of the Integrated Coastal Zone Management (ICZM) Strategy to achieve sustainability, protect and conserve coastal and marine wildlife, habitats, geodiversity and cultural heritage, increasing awareness and understanding of marine and coastal environments and encouraging sensitive use of associated resources.

Plan and lead on the implementation of marine and coastal environment policies ensuring compliance with relevant local conservation legislation and international law to enable Jersey's coastal and seas to be sustainably managed and critical species and ecosystems protected.

Coordinate the development and delivery of an ecological and fish stock management research programme for Jersey's coastal, intertidal, and marine areas to improve the knowledge base and recommend appropriate policy to ensure sustainability.

Monitor the impact of planning and development processes on coastal and marine land and provide professional and technical advice to the regulatory Planning Team and political oversight groups and policy panels, ensuring environmental considerations are taken into account in planning decisions and policy; develop and amend guidelines to continue to improve and streamline processes.

Monitor developments to UK and international marine environmental management legislation and provide technical and scientific input to initiate and inform local law drafting processes, so that Jersey continues to demonstrate its commitment towards sound environmental and conservation management and fulfils its obligations under a range of Multilateral Agreements in the marine and coastal field.

Initiate, develop and maintain relationships at UK and international levels with Government Bodies, NGOs and academic institutions; provide scientific and technical expertise at inter-jurisdictional meetings to represent the Island's interests and influence marine environmental

management policies; liaise with Ministers and politicians at local level to inform and influence strategic decision making processes.

Act as the lead officer for marine spatial planning throughout Jersey's territorial sea and for overseeing the marine licencing and consent process for the deposit of structures and materials in the sea under the Food and Environmental Protection Act.

As a Marine Resources Officer and designated British Sea Fisheries Officer, act as Skipper or Patrol Commander of the marine vessel and undertake effective surveillance, monitoring and inspection of local and foreign fishing vessels at sea, shore based activities and local and foreign marine activities, taking appropriate enforcement action and ensuring that seized equipment and vessels are handled in accordance with the law to ensure compliance with marine environmental legislation; participate in joint patrols with French and UK authorities for cross-jurisdictional enforcement work.

Provide additional support for marine activities, including piloting or manning departmental vessels for research work or undertake search and rescue work.

Gather evidence and prepare case files relating to legal infractions for use in court and give evidence of offences as part of prosecution work, working synergistically with the Marine Operations and Compliance Team in the provision of a comprehensive marine resources related enforcement service.

Monitor the revenue and expenditure budget within the defined financial limits whilst at the same time ensuring the marine science and research section's business objectives are met in order to deliver effective marine and coastal conservation and protection services.

Manage the optimal allocation of team resources to ensure work is completed timely and efficiently.

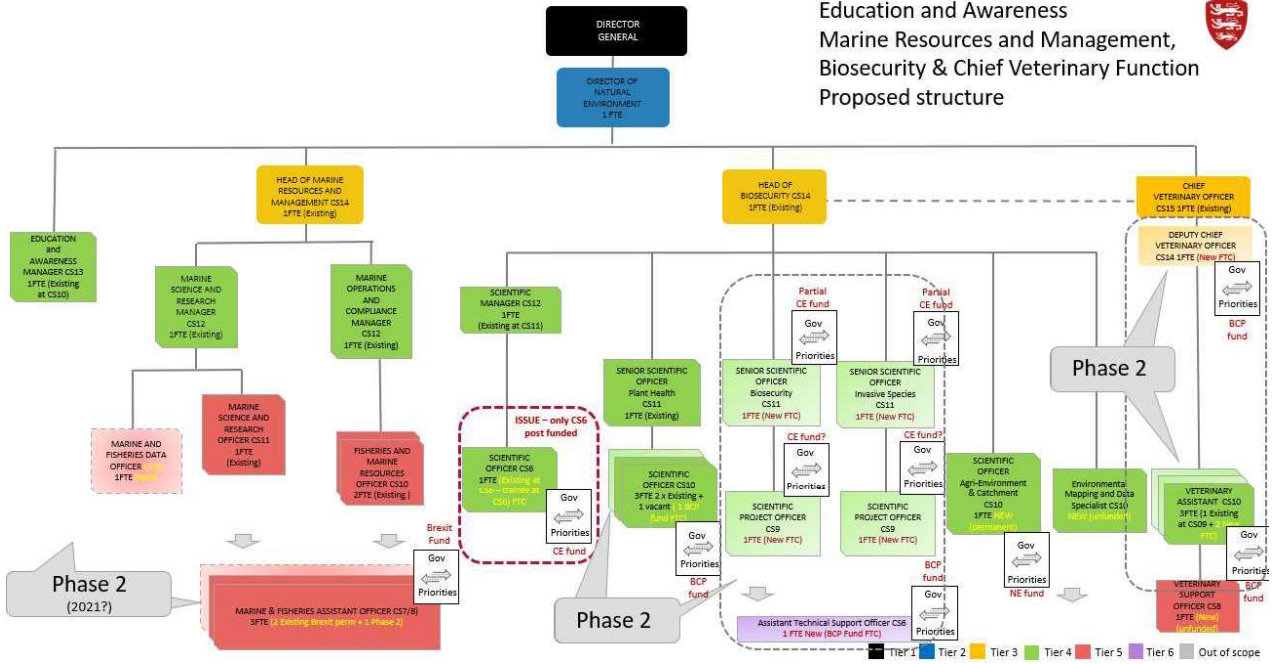
### **Statutory responsibilities**

Active engagement, participation and compliance with any other statutory responsibilities applicable to the role, as amended from time to time.

This role is politically restricted. The job holder is not permitted to undertake political activity involving standing for election to the Government or as a Parish Constable, or publicly supporting someone who is standing for election or playing a public part in any political manner.

**Organisational structure**

NATURAL ENVIRONMENT  
Education and Awareness  
Marine Resources and Management,  
Biosecurity & Chief Veterinary Function  
Proposed structure



## Person Specification

### Specific to the role

ATTRIBUTES	ESSENTIAL	DESIRABLE
<p><b>Qualifications</b> <i>Please state the level of education and professional qualifications and / or specific occupational training required.</i></p>	<p>Postgraduate degree qualification at level 7 or equivalent gained by practical experience in a relevant specialism (e.g. marine biology, environmental science or a related discipline)</p> <p>Chartered Membership of a related professional institution</p> <p>Evidence of further relevant professional courses E.g.</p> <p>Health &amp; Safety certificate (e.g. IOSH)</p> <p>Commercial boating in tidal waters with commercially endorsed RYA Yachtmaster or equivalent</p> <p>Middle management qualification or equivalent</p> <p>Project management qualification or equivalent</p>	<p>HSE Scientific Diver qualification or equivalent</p> <p>PADI Divemaster or equivalent</p>
<p><b>Knowledge</b> <i>This relates to the level and breadth of practical knowledge <b>required</b> to do the job (e.g. the understanding of a defined system, practice, method or procedure).</i></p>	<p>Broad knowledge of marine biology and coastal management concepts</p> <p>Knowledge of working with commercial fishing gear and equipment</p> <p>Basic French conversation skills</p> <p>The latest theory,</p>	<p>Knowledge of:</p> <p>The activity and processes of Government</p> <p>Management reporting as it relates to this role</p> <p>The departmental priorities and key objectives, risks and issues relevant to the</p>

	<p>practices and legislation as related to their industry, including ongoing Continuing Professional Development</p> <p>Knowledge of performance management and understanding of performance metrics</p>	<p>directorate, division and the role</p>
<p><b>Technical / Work-based Skills</b> <i>This relates to the skills specific to the job, e.g. language fluency, vehicle license etc.</i></p>	<p>Excellent research skills</p> <p>Full driving licence including heavy trailer towing</p> <p>Computer literate with ability to operate the Microsoft Office package.</p> <p>Ability to use data management systems, GIS and statistical software.</p>	
<p><b>General Skills/Attributes</b> <i>This relates to more general characteristics required to do the job effectively, e.g. effective written communication skills, ability to delegate, motivation or commitment etc.</i></p>	<p>Problem solving, negotiation and influencing skills</p> <p>Confident decision-maker</p> <p>Ability to develop innovative approaches to service delivery</p> <p>Ability to lead, motivate and manage teams to facilitate achievement of high delivery and performance and manage poor behaviour.</p> <p>Strong relationship building skills</p> <p>Ability to present effectively, both verbally and in writing</p> <p>Ability to produce written</p>	

	materials (e.g. letters, reports, discussion papers, proposals) to a high level for presentation	
<p><b>Experience</b> <i>This is the proven record of experience and achievement in a field, profession or specialism. This could include a minimum period of experience in a defined area of work if required by an external body (for example a period of post-qualification experience).</i></p>	<p>Significant experience of marine and coastal management, some of which at postgraduate level</p> <p>Experience of intertidal / marine survey techniques</p> <p>Commercial boating experience in tidal waters</p> <p>Managing the operational delivery of relevant technical / scientific services</p> <p>Managing staff and budgets</p> <p>Project management experience</p>	<p>Enforcement experience, including investigative interviewing and a good understanding of the criminal justice system</p>

### Core Accountabilities, Attributes and Behaviour Indicators

Appointees to this role will be required to adhere to and perform their duties in line with the standards identified in the Government of Jersey tier 4 core accountabilities attributes and behaviour indicators.

### Organisational structure

