

Scientific Manager

Department: Infrastructure, Housing and Environment

Division: Natural Environment

Reports to: Head of Service

JE Reference: IHE1035

Grade: 12

Job purpose

Leading and managing:

- **Biosecurity Science and Laboratory Services** involving a multi-disciplinary scientific laboratory, accredited to UKAS ISO standards, providing a comprehensive set of analytical and advisory functions and acting as the lead expert in agrichemicals, plant pathology and soil science, to provide expert scientific advice and solutions whilst protecting the Island's natural environment; OR
- **Plant Health Biosecurity Services** coordinating a team of technical and scientific specialists across Jersey and acting as the lead expert in Plant Health Regulation and enforcement, contributing to the strategic priorities of maintenance and improvement of the economic, environmental and social wellbeing of Jersey; AND

Working with the Head of Biosecurity in other specialist areas of Plant Health, Biosecurity and Invasive Species to reduce the risk and impact of regulated and non-native organisms to land based industries, the natural environment and the public of Jersey.

Job specific outcomes

This is a highly specialised role leading and managing:

- a multi-disciplinary scientific laboratory to deliver monitoring, analytical and advisory services in pathology and entomology, agrichemicals and soil science (Biosecurity Science and Laboratory Services); OR
- a team of specialists to deliver a Plant Health Biosecurity service across Jersey to prevent the introduction and establishment of non-indigenous organisms into the natural, farmed and urban environments (Plant Health Biosecurity Services).

Be the lead expert on:

- agrichemicals (biocides, pesticides, fertilisers, poisons) and represent Jersey at national level as the regulatory, scientific and technical conduit between the Government of Jersey and the UK Government HSE on agrichemical matters and the UK Government Plant Health Risk Group on pathology matters. Ensure Jersey meets its local and international

legal responsibilities with regard to agrichemicals (biocides, pesticides, fertilisers and poisons) and their regulation (Biosecurity Science and Laboratory Services). OR

- Plant Health Regulation and enforcement acting as the regulatory, scientific and technical conduit between the Government of Jersey and the UK Government and the UK Plant Health Risk Group (DEFRA) and represent Jersey internationally as Member State representative for the European Plant Protection Organisation (EPPO) and the International Plant Protection Convention (Plant Health Biosecurity Services).

Be responsible for the provision of advisory and monitoring services and / or regulatory, licensing and compliance services:

- Biosecurity Science and Laboratory Services
 - Provide an expert agronomy, pathology and entomology, agrichemical and soil science advisory service to Government, land-based industries, other stakeholders and the general public. This service directly contributes to the strategic priorities of maintenance and improvement of the economic, environmental and social wellbeing of Jersey by promoting environmentally and economically sustainable low impact crop protection systems whilst also protecting ecosystem services (biodiversity, soil, water and air quality) and thus the public wellbeing.
 - As one of the senior advisors within the Department, address effectively the issues and concerns arising from modern land-based industry practices by guiding, advising and liaising with businesses, importers, exporters the public and Government, with sanctions being imposed as a last resort.
 - In the case of pesticides, act as the lead officer for Licensing and research activities.
 - Be responsible for issuing contingency plans and recommending eradication measures in the case of a statutory breach of plant biosecurity in Jersey, whilst assisting the Head of Biosecurity in the wider outbreak control measures.
 - Be responsible for the development and maintenance of a soil health program in Jersey, using appropriate scientific collaboration to achieve this aim.
 - Be responsible for the design and implementation of contingency plans for the management and eradication of non-indigenous plant pests and diseases in accordance with Government strategic aims and ambitions. OR
- Plant Health Biosecurity Services
 - Be responsible for provision of a Plant Biosecurity service meeting increased requirements for official controls on a wide scope of regulated material, following the UK's departure from the EU and modernisation of international legislation. Leading a team of specialist, qualified and legally empowered enforcement officers, delivery will involve partnership working alongside and advising Jersey's Customs and Immigration Service whilst observing strict international legislation and standard operating systems.

- Be responsible for delivery of legally required data collection, collation and publication of activities conducted in pursuance of Plant Biosecurity and have these records available for inspection by international audit.
- Be responsible for delivery of legally required licensing and registration of professional and other land-based operatives with relevance to Plant Biosecurity, including the audits and authorisations necessary for exports to the UK and to offer regulated products for sale on the local market.
- Be responsible for delivery of legally required information systems, allowing Government to inform professionals and the public of their responsibilities, potential threats or new information, whilst also allowing users to pass relevant information back to Government.
- Act as the lead Designated Officer for multiple additional regulations and legislation, working with the Head of Biosecurity to use the specific powers and responsibilities contained within those regulations to support biosecurity in Jersey.
- In the case of a statutory breach of biosecurity in Jersey, be responsible for issuing phytosanitary control orders, enforcing control and eradication measures whilst assisting the Head of Biosecurity in the wider outbreak control measures.
- In the case of agrichemicals, act as the lead officer for Regulatory activities.
- Sit on a number of national and international expert panels and governing bodies such as DEFRA (UK) panels and EPPO (EU) committees, representing Jersey's interests and participating in strategic decision making at intergovernmental level in relation to regional and international cooperation in Plant Health. AND

Be responsible for the drafting, implementation and maintenance of local laws and regulations in the area of Agrichemicals and Plant Health, ensuring that Jersey meets its local and international legal responsibilities.

Work collaboratively with the other Scientific Manager to deliver a pesticide use, storage and training program, coordinating the provision of specialist training to wide stakeholders and providing expert opinion into existing and potential legally mandated training; ensure that training in the areas of pesticide storage and use and the use of classified poisons on the island meets national and international requirements and that operators adhere to all legislative and best practice protocols.

Alongside the other Scientific Manager, provide a pesticide Maximum Residues Limits monitoring service, in line with EU and local legislation to ensure food safety on agricultural produce.

Be responsible for pathology phytosanitary inspections and certification for transboundary shipment of live plant material internationally and inter-continently, ensuring all relevant phytosanitary and biosecurity requirements are met, in turn maintaining the Island's reputation as a producer of high-quality produce, meeting UK and international standards and to satisfy the 'Protected Designation of Origin' (PDO) requirements with regard to local produce such as the Jersey Royal potato.

Maintain appropriate professional networks with external national and international organisations relevant to plant health, engaging in collaborations, workshops, conferences and information exchange to keep up to date with best practice standards.

Monitor an expenditure budget within defined financial limits and where/if appropriate maximise income, whilst at the same time ensuring business objectives are met in order to contribute to the delivery of the directorate's vision.

Statutory responsibilities

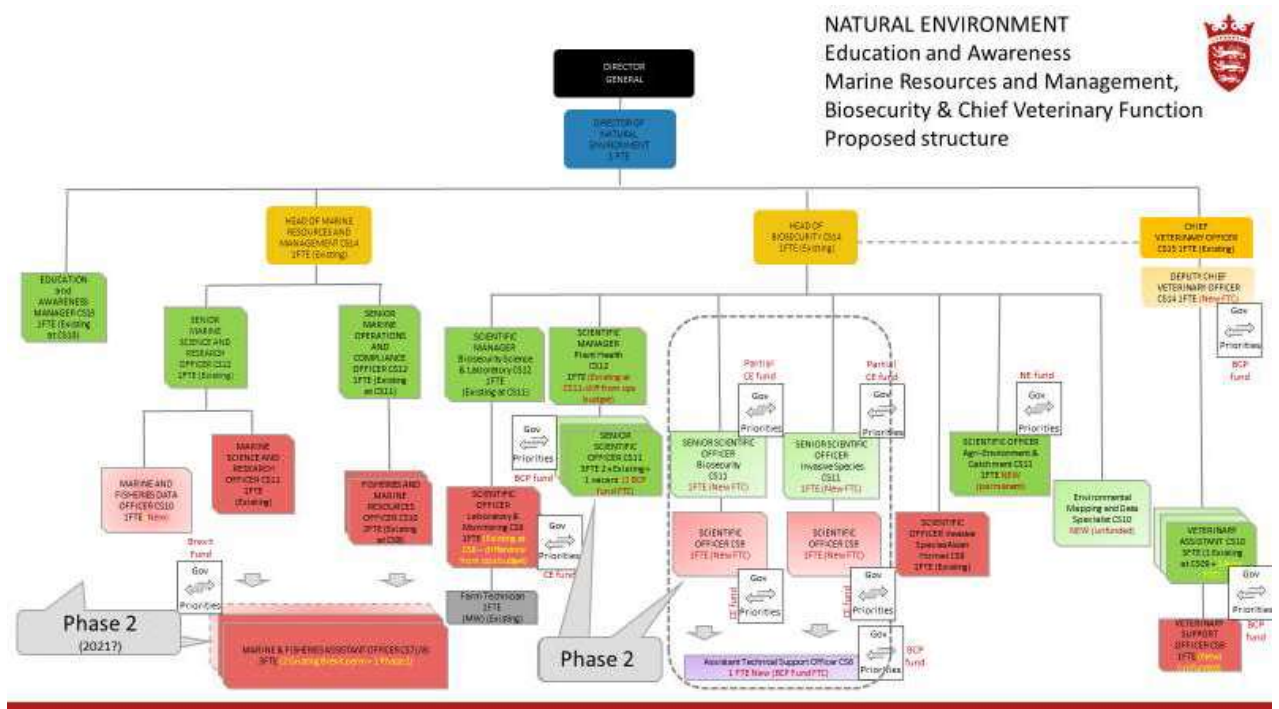
Active engagement, participation and compliance with any other statutory responsibilities applicable to the role, as amended from time to time.

This role is politically restricted. The job holder is not permitted to undertake political activity involving standing for election to the Government or as a Parish Constable, or publicly supporting someone who is standing for election or playing a public part in any political manner.

Services

- Scientific Manager - Biosecurity Science and Laboratory
- Scientific Manager - Plant Health

Organisational structure



Person Specification

Specific to the role

ATTRIBUTES	ESSENTIAL	DESIRABLE
<p>Qualifications <i>Please state the level of education and professional qualifications and / or specific occupational training required.</i></p>	<p>Level 6 degree qualification in Biological Science or equivalent</p> <p>Postgraduate qualification in Plant Pathology or a relevant specialism at level 7 or 8, or equivalent industrial and/or professional experience.</p> <p>Professionally qualified and an accredited member (MBPR) of BASIS (British Agrochemical Standards Inspection Scheme)</p> <p>BASIS FACTS (Fertiliser Advisers Certificate and Training Scheme) professionally qualified</p> <p>Senior Member of (or working towards) of the Plant Health Professional Register (Royal Society of Biology).</p>	
<p>Knowledge <i>This relates to the level and breadth of practical knowledge required to do the job (e.g. the understanding of a defined system, practice, method or procedure).</i></p>	<p>Expert professional knowledge of plant health, pathology, agronomy, soil science, pesticide science and related Jersey, U.K and E.U. legislation.</p> <p>A detailed knowledge of the island's land-based industries, modern agricultural practices, biosecurity and plant</p>	

	<p>health, environmental and ecosystem services issues as related to the farmed and natural environment</p> <p>Knowledge of plant health survey techniques and methodologies</p> <p>Ongoing Continuing Professional Development to remain up to date with the latest methodologies, research and best practice</p> <p>Knowledge of managing a budget and business planning processes.</p>	
<p>Technical / Work-based Skills <i>This relates to the skills specific to the job, e.g. language fluency, vehicle license etc.</i></p>	<p>Excellent research skills, including technical laboratory methods and protocols</p> <p>Computer literate with ability to operate the Microsoft Office package</p> <p>Proficient in ESRI ARC GIS and MS CRM</p> <p>Ability to use data management systems</p> <p>Driving licence (group B)</p>	
<p>General Skills/Attributes <i>This relates to more general characteristics required to do the job effectively, e.g. effective written communication skills, ability to delegate, motivation or commitment etc.</i></p>	<p>Problem solving, negotiation and influencing skills</p> <p>Confident decision-maker</p> <p>Ability to develop innovative approaches to service delivery</p> <p>Ability to lead, motivate and manage teams to facilitate achievement of high delivery and</p>	

	<p>performance and manage poor behaviour.</p> <p>Strong relationship building skills</p> <p>Ability to present effectively, both verbally and in writing</p> <p>Ability to produce written materials (e.g. letters, reports, discussion papers, proposals) to a high level for presentation</p>	
<p>Experience <i>This is the proven record of experience and achievement in a field, profession or specialism. This could include a minimum period of experience in a defined area of work if required by an external body (for example a period of post-qualification experience).</i></p>	<p>Extensive experience within one of the disciplines of the post (Agriculture, Horticulture, Plant Health, Environmental Science or a relevant discipline) in a lead technical or professional advisory capacity.</p> <p>Managing the operational delivery of relevant technical / scientific services</p> <p>Managing staff and budgets</p>	

Core Accountabilities, Attributes and Behaviour Indicators

Appointees to this role will be required to adhere to and perform their duties in line with the standards identified in the Government of Jersey tier 4 core accountabilities attributes and behaviour indicators.

Organisational structure

