

Environment Officer

Department: Infrastructure, Housing and Environment

Division: Natural Environment

Reports to: Environment Manager

JE Reference: IHE1039

Grade: 10

Job purpose

Designing and delivering research programs and providing evidence-based expert documentation and advice to ensure that the Island's wildlife, habitats and water resources are protected and enhanced, and that wider Government strategic goals and international obligations are met.

Job specific outcomes

[The officer will specialise in one or more work areas, but also be able to contribute and support activities across the various disciplines within Land Resource Management to deliver a synergistic and holistic approach to natural resource management. The specialist roles include: developing and advising on strategy, legislation, good practise and international obligations, biodiversity conservation, land and habitat management, water quality (marine and inland) and water availability, provision and enhancement of public countryside access networks for conservation and public wellbeing and research, scientific studies, data management and outreach.]

Develop and deliver strategies and policies and lead the development, design and implementation of a wide range of interconnected complex scientific projects and specialist technical work programmes to protect, manage, enhance and raise awareness of the Island's natural environment, including the conservation and safeguard of water for ecosystems and public use, the conservation and management of protected areas, habitats and species and access and use of the countryside.

Design and implement research programs, surveys and management programs. Provide expert analysis, advice and reports on a wide range of complex environmental, research and legislative areas that contribute to Government policy, strategy and local and international obligations.

Produce expert technical biodiversity, landscape and water management plans, organising the development and implementation of annual work programs that include specialist conservation management and species recovery programmes on protected nature areas and other areas of land. Act as the professional lead in all matters relating to countryside access which contributes to the wellbeing of the public.

Develop, manage and centralise the collection of all natural environment data from within Government, partner organisations and the public and present results using current and bespoke

software, including geographic information systems. Identify and develop IT data systems to increase data recording and reporting efficiency.

Participate in Government working groups and provide specialist advice to the revision and drafting of wider Government policy, strategy and legislation with particularly emphasis on the conservation and enhancement of biodiversity, landscapes and water quality and quantity.

Engage with and provide professional scientific and specialist aquatic and terrestrial advice to other Government Departments, Ministers and senior officers, private industry, developers and others to ensure compliance with environmental legislation and the adoption of best practice for the benefit of biodiversity, water and landscape protection.

Support the Environment Manager in drafting responses to Ministers (States questions, Scrutiny) and others (inc. Public Accounts Committee hearings, Appeals and FOIs,). Brief Ministers and undertake media interviews as required.

Minimise the impact on the natural environment (habitat, biodiversity and water) from development by screening, submitting statutory consultee responses and the inclusion and monitoring of conditions on planning applications and building control processes.

Provide scientific advice to the Regulation Directorate, other specialist Natural Environment teams and Government Departments (inc. Emergency Services) involving assessment and remedial action for environmental incidents and enforcement investigations in order to safeguard the environment and the public. Prepare expert witness statements for investigations and act as an expert witness in court prosecutions. Attend and advise on emergency incidents to safeguard the environment.

Administer licensing systems in line with the various environmental legislation, managing the application, granting and monitoring of licences that are conditioned for optimal protection of the natural resources.

Develop effective working networks and establish and lead user groups with internal and external stakeholders to ensure consensus and the wide uptake of Ministerial and Government policy and strategic objectives.

Seek out collaboration with other Channel Islands and partner organisations in other jurisdictions to ensure best practice and the fulfilment of local and international obligations.

Identify, engage and oversee delivery of countryside maintenance contracts and consultants in line with Government financial guidelines that deliver planned targets and offer value for money.

Work in partnership with the IHE Health and Safety Team to review and revise Health and Safety guidelines and ensure staff and contractors are highly trained and aware of the Health and Safety policy and procedures at all times to safeguard the safety and wellbeing of staff and the general public.

Statutory responsibilities

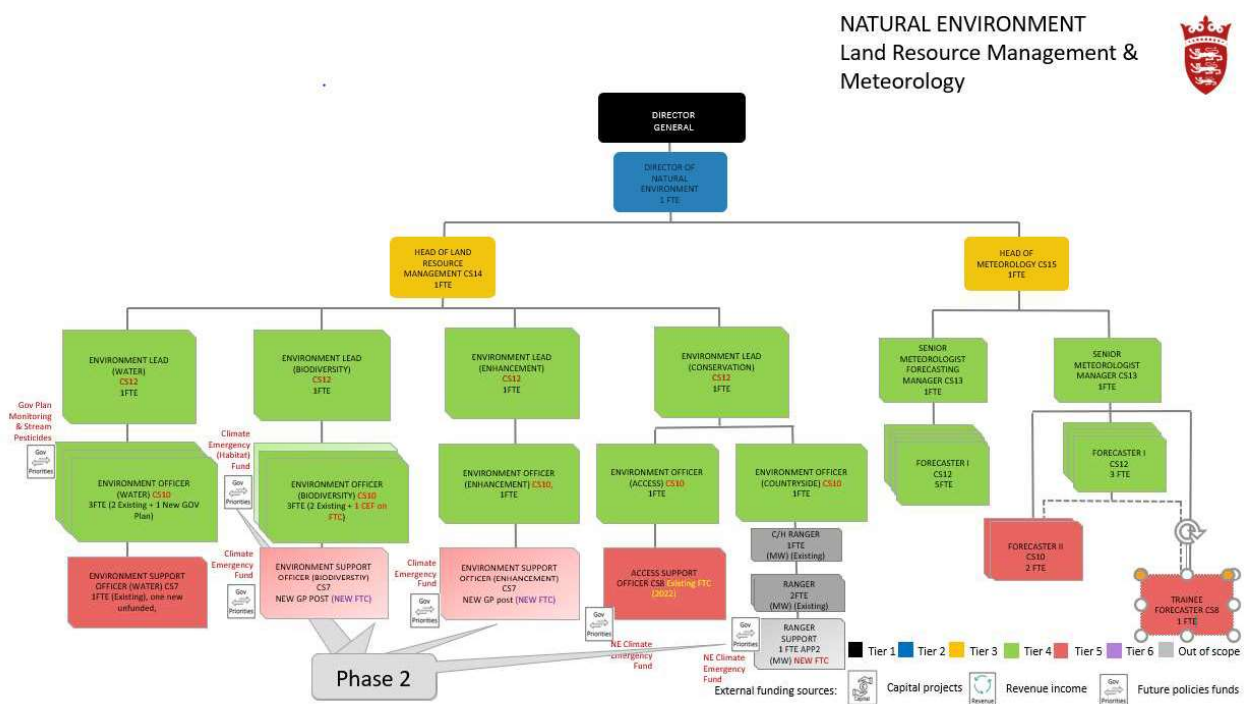
Active engagement, participation and compliance with any other statutory responsibilities applicable to the role, as amended from time to time.

Act as a designated officer under the Minister according to the various associated Environmental Laws.

Services

- Environment Officer - Biodiversity
- Environment Officer - Water
- Environment Officer – Land Conservation
- Environment Officer - Enhancement

Organisational structure



Person Specification

Specific to the role

ATTRIBUTES	ESSENTIAL	DESIRABLE
<p>Qualifications <i>Please state the level of education and professional qualifications and / or specific occupational training required.</i></p>	<p>Level 6 degree qualification in a relevant specialism or equivalent (e.g. Environmental, Natural Sciences with a specialisation in statistical analysis and ICT as relevant to the role)</p> <p>Chartered Membership of a related professional institution (e.g. Chartered Institute of Ecology and Environmental Management, Chartered Institute of Water and Environment Management)</p>	
<p>Knowledge <i>This relates to the level and breadth of practical knowledge required to do the job (e.g. the understanding of a defined system, practice, method or procedure).</i></p>	<p>Thorough knowledge of the scientific and technical basis for their area of expertise as it related to the role i.e. water quality and resource management, biodiversity and landscape management</p> <p>Awareness of the challenges that face Jersey for the future as well as broader economic, social and environmental issues and the interaction between different local economy policy areas.</p> <p>Knowledge of analytical, monitoring and research</p>	<p>Knowledge of:</p> <p>The activity and processes of Government</p> <p>Management reporting as it relates to this role</p> <p>The departmental priorities and key objectives, risks and issues relevant to the directorate, division and the role</p>

	<p>techniques and methodologies</p> <p>Thorough working knowledge of the local legislation in place for the protection and enhancement of water resources, biodiversity and landscapes</p> <p>Understand the extent of national and international environmental legislation, agreements and quality standards in place</p> <p>Ongoing Continuing Professional Development to remain up-to-date with the latest methodologies and industry research and best practice</p>	
<p>Technical / Work-based Skills <i>This relates to the skills specific to the job, e.g. language fluency, vehicle license etc.</i></p>	<p>Excellent research, analysing, reporting and presenting skills</p> <p>Confidence in utilising GIS mapping and spatial technology</p> <p>Proficient user of field recording equipment</p> <p>Computer literate with ability to operate the Microsoft Office package</p> <p>Ability to use data management systems</p> <p>Driving licence (Group B)</p>	
<p>General Skills/Attributes <i>This relates to more general characteristics required to do the job effectively, e.g. effective written communication skills, ability to</i></p>	<p>Problem solving, strong negotiation, mediation and influencing skills</p> <p>Confident decision-maker</p>	<p>Boat handling skills and certification.</p>

<p><i>delegate, motivation or commitment etc.</i></p>	<p>Ability to develop innovative approaches to service delivery</p> <p>Ability to lead, motivate and manage teams to facilitate achievement of high delivery and performance and manage poor behaviour.</p> <p>Strong relationship building skills</p> <p>Ability to present effectively, including to Ministers and at high level meetings, both verbally and in writing, presenting complex scientific information in an accessible and understandable format.</p> <p>Ability to produce written materials (e.g. letters, reports, discussion papers, proposals) to a high level.</p>	
<p>Experience <i>This is the proven record of experience and achievement in a field, profession or specialism. This could include a minimum period of experience in a defined area of work if required by an external body (for example a period of post-qualification experience).</i></p>	<p>Significant experience in scientific field work undertaking research with analytical/statistical and ICT skills</p> <p>Practical experience of landscape management to a wide variety of habitats and species</p> <p>Experience in Project Management and implementation of change projects</p> <p>Experience with analytical and monitoring techniques and data gathering to a high scientific standard and if appropriate for the</p>	

	<p>role, experience in carrying out biodiversity and landscape distribution and connectivity modelling with the appropriate graphical user interfaces (GUIs)</p> <p>Managing the operational delivery of relevant technical / scientific services</p>	
--	---	--

Core Accountabilities, Attributes and Behaviour Indicators

Appointees to this role will be required to adhere to and perform their duties in line with the standards identified in the Government of Jersey tier 4 core accountabilities attributes and behaviour indicators.

Organisational structure

