

## Senior Environment Officer

---

**Department:** Infrastructure, Housing and Environment

**Division:** Natural Environment

**Reports to:** Environment Manager

**JE Reference:** IHE1056

**Grade:** 11

**JE Date:** 16/4/2021

### Job purpose

Working across Government to develop areas of Government Policy and strategic delivery relating to the Island's Natural Environment through the provision of expert advice founded on targeted evidence-based research and reporting.

Being the island expert and lead specialist officer in one of the following areas and contribute to the others:

- Identify and provide robust and specialist research and reporting. Use this to inform interventions and policy across all stakeholders and Government to protect and enhance the Island's natural environment, biodiversity and protected sites.
- Build upon and develop the safeguard and management of the Island's countryside and biodiversity. Maximise the access and enjoyment by key users to the countryside to promote public wellbeing.
- Undertake targeted research and interventions for the monitoring, assessment, protection and sustainability of all island waters (including inland streams, groundwater and marine waters).
- Carryout research and interventions for the monitoring and assessment of air quality in Jersey and related interdependencies to ensure protection of ambient air against harmful levels of air pollutants.

### Job specific outcomes

*[The officer will be the lead officer and island specialist expert in one or more work areas, but also be able to inform and support activities across the various disciplines within Land Resource Management and Government to deliver a synergistic and holistic island approach to natural resource management.]*

Be the professional lead and island expert responsible for developing and advising on policy, strategy, legislation, good practice and international obligations, biodiversity conservation, land and habitat management, air quality, water quality (marine and inland) and water availability, provision and enhancement of public countryside access networks for conservation, public wellbeing, research, scientific studies, data management and outreach.

Work thematically across the Department and Government to extend and embed approaches relating to the natural environment, access, air and water so that they are represented in all Government strategic policy and approaches.

Responsible for identifying, leading and delivering a wide range of interconnected complex scientific research projects and specialist surveys. Use the resulting robust data to proactively

seek out and contribute to Government policies, strategies and local and international obligations that is informed by robust evidence.

Design, manage and regulate management programs, technical work areas and raise awareness of the Island's natural environment, including the conservation and safeguard of water for ecosystems and public use, the conservation and management of protected areas, habitats and species and access and use of the countryside, and the protection of air quality.

Produce expert technical biodiversity, landscape, air quality and water management plans. Lead on the development and implementation of annual maintenance and improvement programs that include specialist conservation management and species recovery programmes on protected nature areas and other areas of land.

Draft responses to Ministers and other political fora (e.g. States questions, Scrutiny, Public Accounts Committee hearings), including departmental responses as required under various processes and pieces of legislation (e.g. Appeals and FOIs). Brief Ministers and undertake media interviews as required.

Be the Delegated Officer under the various laws. Provide technical scientific advice to the Regulation Directorate regarding the need for stronger enforcement action in individual investigations and the need for enforcement campaigns. Prepare expert witness statements for investigations and act as an expert witness in court prosecutions. Attend and advise on emergency incidents to safeguard the environment.

Provide technical and best practice advice to the Regulation Department and the public on the remediation of air and land contaminated by pollution incidents and mitigation measures to safeguard species and biodiversity.

Develop and administer licensing systems in line with the various environmental legislation. Coordinate the management of the application, granting and monitoring of licences that are conditioned for optimal protection of the natural resources.

As a statutory consultee, minimise the impact on the natural environment (habitat, biodiversity, air and water) from development by screening, submitting statutory consultee responses and formulate and follow up appropriate Conditions on planning applications and building control processes working collaboratively with the Regulation Directorate.

Develop, manage and maintain an island central database for the collection of all natural environment data including from the Government, partner organisations and the public. Develop and coordinate the analysis and presentation of data using current and bespoke software (for example geographic information systems). Advise and implement changes to optimise best practice, public accessibility and value for money. Identify and develop IT data recording, storage and mapping systems to optimise data recording and reporting efficiency.

Develop effective working networks and engage with and provide professional scientific and specialist aquatic, air and terrestrial advice to other Government Departments, Ministers and senior officers, private industry, developers and others to ensure compliance with environmental legislation and the adoption of best practice for the benefit of biodiversity, water, air and landscape protection.

Seek out, establish and lead stakeholder groups to increase user participation and protection.

Proactively seek out and develop collaboration with other Channel Islands and partner organisations in other jurisdictions to ensure best practice and the fulfilment of local and international obligations.

Identify, engage and oversee delivery of countryside maintenance contracts and consultants in line with Government financial guidelines that deliver planned targets and offer value for money.

Review and revise Health and Safety guidelines in partnership with the IHE Health and Safety Team and ensure staff and contractors are highly trained and aware of the Health and Safety policy and procedures at all times to safeguard the safety and wellbeing of staff and the general public.

Line manage and build strong teams that can both deliver internal work streams and contribute to wider Government goals.

Advise and support the Head of Land Resource Management and/or Environmental Mangers and deputise for the Environmental Mangers in the specialist Natural Environmental areas.

### Statutory responsibilities

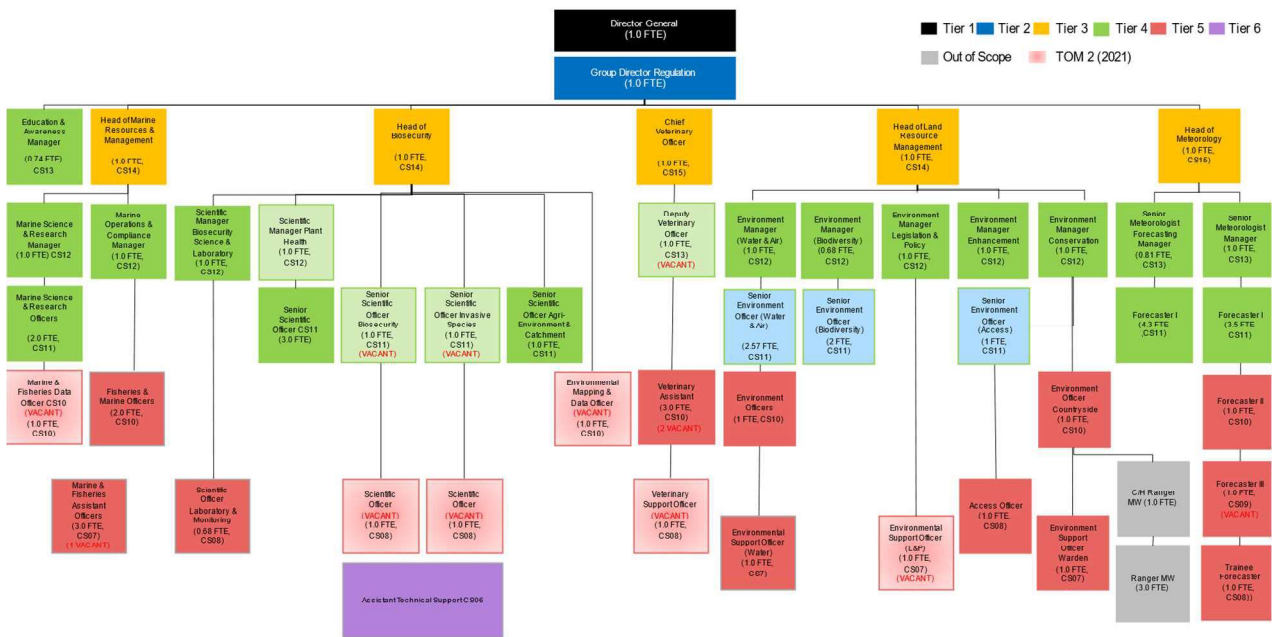
Active engagement, participation and compliance with any other statutory responsibilities applicable to the role, as amended from time to time.

Act as a designated officer under the Minister according to the various associated Environmental Laws.

### Services

- Environment Officer - Biodiversity
- Environment Officer - Water
- Environment Officer – Landscape
- Environment Officer – Air Quality

### Organisational structure



## Person Specification

### Specific to the role

ATTRIBUTES	ESSENTIAL	DESIRABLE
<p><b>Qualifications</b> <i>Please state the level of education and professional qualifications and / or specific occupational training required.</i></p>	<p>Level 6 degree qualification in a relevant specialism or equivalent (e.g. Environmental, Natural Sciences with a specialisation in statistical analysis and ICT as relevant to the role).</p> <p>Postgraduate qualification in Environmental or Natural Science disciplines.</p> <p>Professional qualification in natural science or IT related discipline (e.g. Bat related competencies).</p> <p>Chartered Membership of a related professional institution (e.g. Chartered Institute of Ecology and Environmental Management, Chartered Institute of Water and Environment Management, Chartered Institute of Environmental Health etc.).</p>	
<p><b>Knowledge</b> <i>This relates to the level and breadth of practical knowledge required to do the job (e.g. the understanding of a defined system, practice, method or procedure).</i></p>	<p>A detailed knowledge of the scientific and technical basis for their area of expertise as it related to the role i.e. water quality and resource management, air quality, biodiversity and landscape management</p> <p>Awareness of the challenges that face Jersey for the future as well as broader economic, social and environmental issues and the interaction between different local economy policy areas.</p> <p>Detailed knowledge of analytical, monitoring and research techniques and methodologies</p> <p>Detailed working knowledge of the local legislation in place for the protection and enhancement of water resources, biodiversity and landscapes</p> <p>Understand the extent of national and international environmental legislation, agreements and quality standards in place</p> <p>Ongoing Continuing Professional Development to remain up-to-date with the latest methodologies and industry research and best practice.</p>	<p>Knowledge of:</p> <p>The activity and processes of Government</p> <p>Management reporting as it relates to this role</p> <p>The departmental priorities and key objectives, risks and issues relevant to the directorate, division and the role</p>
<p><b>Technical / Work-based Skills</b> <i>This relates to the skills specific to</i></p>	<p>Excellent research, analysing, reporting and presenting skills</p> <p>Confidence in utilising GIS mapping and spatial technology</p>	<p>Small boat operators licence.</p>

<p><i>the job, e.g. language fluency, vehicle license etc.</i></p>	<p>Experience in Project Management and implementation of change projects</p> <p>Proficient user of field recording equipment</p> <p>Computer literate with ability to operate the Microsoft Office package</p> <p>Ability to use data management systems</p> <p>Driving licence.</p>	
<p><b>General Skills/Attributes</b> <i>This relates to more general characteristics required to do the job effectively, e.g. effective written communication skills, ability to delegate, motivation or commitment etc.</i></p>	<p>Problem solving, strong negotiation, mediation and influencing skills</p> <p>Confident decision-maker</p> <p>Ability to develop innovative approaches to service delivery</p> <p>Ability to lead, motivate and manage teams to facilitate achievement of high delivery and performance and manage poor behaviour.</p> <p>Strong relationship building skills</p> <p>Ability to present effectively, including to Ministers and at high level meetings, both verbally and in writing, presenting complex scientific information in an accessible and understandable format.</p> <p>Ability to produce written materials (e.g. letters, reports, discussion papers, proposals) to a high level.</p>	<p>Boat handling skills and certification.</p>
<p><b>Experience</b> <i>This is the proven record of experience and achievement in a field, profession or specialism. This could include a minimum period of experience in a defined area of work if required by an external body (for example a period of post-qualification experience).</i></p>	<p>Significant experience in scientific field work undertaking research with analytical/statistical and ICT skills</p> <p>Practical experience of landscape management to a wide variety of habitats and species</p> <p>Experience with analytical and monitoring techniques and data gathering to a high scientific standard and if appropriate for the role, experience in carrying out biodiversity and landscape distribution and connectivity modelling with the appropriate graphical user interfaces (GUIs) and experience</p> <p>Managing the operational delivery of relevant technical/scientific services.</p>	