

Multi-Skilled Mechanical Technician – Pumping Stations

Department: Infrastructure, Housing and Environment

Section: Operations and Transport

Reports to: Operations Manager Pumping Stations

JE Ref: IHE1107

Grade: TECH08

JE Date: 3/10/2021

Job purpose

To provide the Pumping Stations section of IHE with a multi-skilled mechanical engineering resource in order to construct, maintain and repair sewage pumping assets in accordance with statutory regulations and the manufacturer's recommendations, to ensure safety, reliability and cost effectiveness of the network. Across the Island, the IHE portfolio of critical infrastructure includes a network of over 100 sewage pumping stations. These vary in size from installations serving a relatively small number of houses, and therefore incorporating pumps handling a modest water flow, to much more substantial stations involving pumps standing more than 6 feet high capable of pumping hundreds of thousands of litres every hour.

Job specific outcomes

The responsibilities of the role therefore require the role-holder to undertake the following activities:

- The role-holder is to maintain, repair, service, and when required, replace the range of pumping station mechanical components, pumps, and pipework.
 - Undertake isolations of key wastewater infrastructure assets within the network of over 100 sewage pumping stations. Monitor the relevant telemetry systems to ensure no spill event or catastrophic mechanical or electrical failure is not attended to promptly.
 - Carry out and develop planned preventative maintenance, servicing and overhauls of pumping station equipment and assets, including performing inspection and testing process systems and equipment, in accordance with the statutory regulations appropriate to the particular item of equipment being worked on. The nature of this equipment varies.
 - The role-holder has what is termed a core skill, but also a relevant secondary skill allowing them to broaden the range of tasks and activities to which they will be deployed.
 - Take an active role in the creation, development and implementation of health and safety written risk assessment, including the production of written dynamic risk assessments when on site and dealing with situations not conforming to a standard risk assessment. Similarly the role holder will assist when required with the production of method statements, when requested.
-

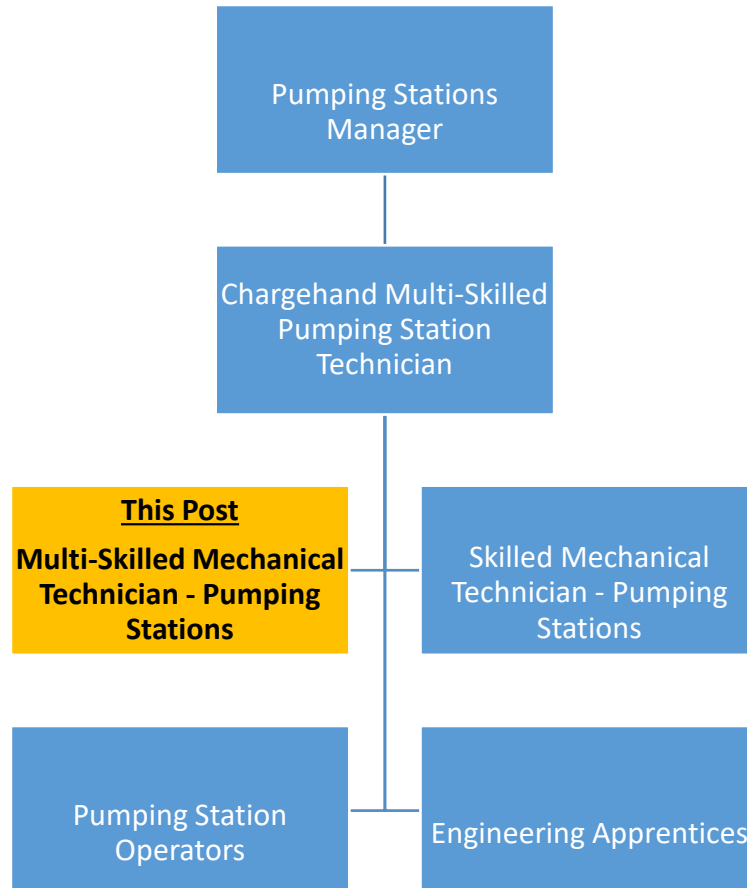
- Assist in the design, manufacture, or modification of simple components, which are not subject to statutory design criteria, nor affecting the safe use or operation of any equipment. This will therefore involve the role-holder using machining skills to, for example, fashion components of particular dimensions, shape, or other requirement, from raw materials, such as metal bars. The metal used can vary, and may be, for example, bronze, brass, or stainless steel and to fabricate/weld/construct components from sheet steel/stainless steel/aluminium/alloys.
- Carrying out all required preparation and cleaning of equipment and assets both prior to, and following, maintenance or repair. The role-holder is required to use appropriate tools and specialist machinery in a safe manner to carry out the necessary tasks efficiently.
- The role-holder is required to report back on the work that they have carried out, the materials used that time taken, any further work which may be required, and the condition of the asset in question, by effectively using the appropriate work reporting system.

Organisational structure

One Government Departments



Organisation chart



Person Specification

Specific to the role

ATTRIBUTES	ESSENTIAL	DESIRABLE
<p>Qualifications</p>	<ul style="list-style-type: none"> • The role-holder is required to have a Level 3 City and Guilds qualification, or an acceptable equivalent. Beyond this, with the specific skill dictated by organisational need, the role-holder must have a further qualification, other than their core skill, requiring 10 days or 80 hours additional training, delivered by a recognised training provider. • Similarly, they would be required to have completed the relevant City and Guilds Level 2 training course relating to working in medium risk confined spaces. • The role-holder must also have a full driving licence allowing them to drive a car and is required to obtain an HGV licence with additional certification to operate an HGV-mounted crane. Similarly, the role-holder must achieve the necessary certification to operate a Mobile Elevated Work Platform. 	
<p>Knowledge</p>	<ul style="list-style-type: none"> • Fully apply judgement in relation to the inspection, certifying and signing off of work, to determine that it complies with all requirements. • Be able to provide appropriate guidance to less qualified personnel, including apprentices. 	

	<ul style="list-style-type: none"> • Where required, be able to fully understand and apply instructions and directions provided by more senior colleagues. • The role-holder must have a full understanding of the work processes and methods for accessing each pumping station, paying particular regard to the hazards associated with pumping stations, such as working at height, the risk of drowning, the potential presence of toxic and hazardous gases, the illnesses that can be contracted from raw sewage, safe lifting operations, working in confined spaces, and hazards associated with hydraulics and electrical installations. • Be able to work collaboratively with others and as a team member. • Adhere to all safety and governance procedures. 	
<p>Technical / Work-based Skills</p>	<p>The role-holder will receive instructions and guidance from, and be allocated tasks by, for the most part, a Chargehand, either verbally or via a computer-generated worksheet. However, significant elements of the role-holder's 'contact' is actually receiving alerts from pumping station telemetry alarm systems. The role-holder must ensure that the alarm system on their mobile phone is fully functioning at all times. The role-holder must understand the necessary response levels,</p>	

	<p>respond to alarms effectively, taking the correct course of action, including knowing when to escalate matters.</p> <p>The role-holder will have regular interaction with fellow multi-skilled technicians, chargehands, and apprentices, which will include the role-holder being expected to pass on job knowledge appropriate. The role-holder will instruct, train, and oversee the work of apprentices and of other young people on work (or workplace) experience courses.</p>	
<p>General Skills/Attributes</p>	<ul style="list-style-type: none"> • When working in a formally designated confined space is particularly important for the role-holder to communicate clearly to other team members verbally, particularly with regard to the health and safety perspectives. • There may be occasions when the role-holder is the senior qualified member of a group working in an on-site party and will therefore take the lead role for the giving of instructions. 	
<p>Experience</p>	<ul style="list-style-type: none"> • An individual recruited to the role externally would be expected to have reasonable knowledge of the field of work, gained from on-the-job training. Where recruiting internally, the recruit would have completed an apprenticeship, or hold the correct certification for the role if moving from another department. • An individual recruited with the requisite 	

	<p>qualifications and experience should be up to speed to perform in the role at an acceptable standard after a period of between 6 to 12 months.</p> <ul style="list-style-type: none">• The role-holder must also complete relevant specialist short training courses which will relate to individual items of equipment or assets. These are typically of one week's duration and are provided by either equipment manufacturers or specialist training providers.	
--	---	--